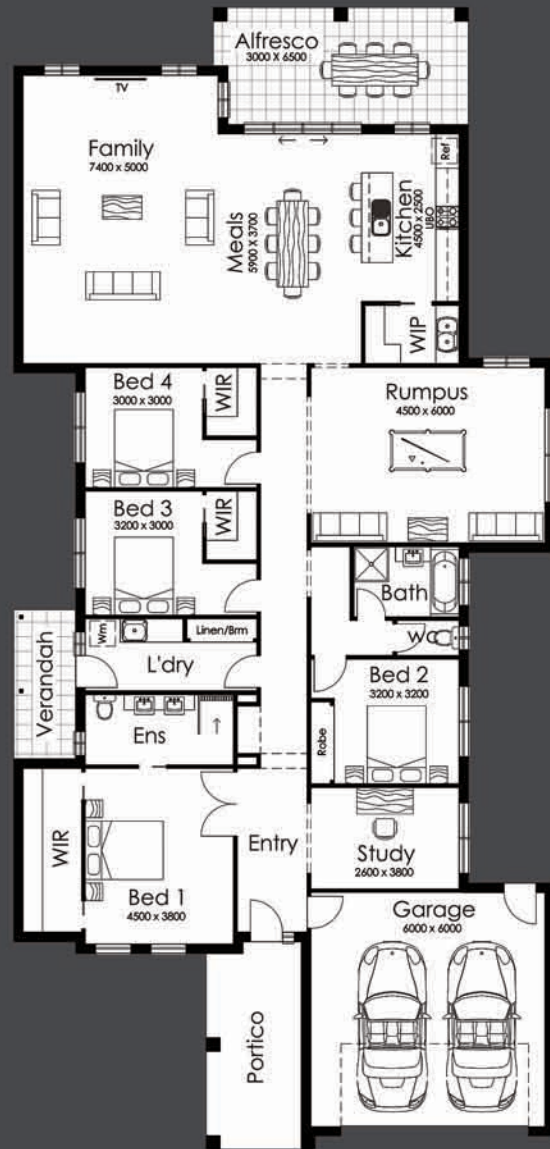




BRUCE MACTIER
BUILDING DESIGNERS
WE BUILD ON YOUR IDEAS



NEPEAN 26.2



TRADITIONAL



COASTAL



CONTEMPORARY

NEPEAN 26.2

This four bedroom dwelling features a study and two large living areas. The walk in robes to most bedrooms make this house ideal for a family with teenagers.

The alcove near the entry can showcase that special picture or vase, and is also a place to put your keys if you would like a built in bench or drawer.

Living Area	243.49m ²	4	Bedroom	
Garage Area	40.59m ²	2	Ensuite/Bath	
Alfresco Area	19.03m ²	2	Double Garage	
Verandah Area	6.08m ²			
Portico Area	13.26m ²			



Holloway
BUILDING SOLUTIONS
DBU12881 ABN: 46 692 845 617

Call Andrew on
0418 597 246